



## Message from the Director

---

Greetings. With the coronavirus pandemic in full swing, the inextricable links between culture, social institutions, policies, and health seem more vivid than ever. The curriculum of the Health and Society minor is designed to address these complex connections through rigorous interdisciplinary training in the social foundations of health. Whether you are interested in exploring historical processes, structural racism, gender, film and digital media, global health, or the psychological dimensions of health, our flexible curriculum is designed to suit your unique interests. Now more than ever, we need people with training in these areas and the ability to think systematically about how to address the health challenges we face.

Since its inception in Fall 2019, the Health and Society Program has continued to grow and thrive with new students, faculty, and course offerings. We have also hosted events to foster community and bring perspective to pressing health issues. Last November, Dr. Mikki Kressbach, Assistant Professor in Film and TV Studies, gave a fantastic talk on how wearable health technologies shape individuals' sense of health and well-being, highlighting the uneven and diverse range of embodied experiences the use of these technologies enable. In April, we hosted an interdisciplinary panel on COVID-19, featuring Carla Bittel (HIST), Inas Kelly (ECON), Kathryn Mouzakis (CHEM), Mairead Sullivan (WGST), and Rachel Washburn (SOCL/HEAS). Panelists discussed a variety of issues ranging from how the coronavirus pandemic compares to pandemics of the past to the molecular structure and behavior of SARS-CoV-2. The recording is available at <https://bellarmine.lmu.edu/heso/>.

This year, we planned and co-organized a talk by Jonathan Metzl, author of *Dying of Whiteness: How the Politics of Racial Resentment is Killing America's Heartland*, to shed light on the links between racism, voting patterns, and health.

We are currently in the process of organizing events for Spring 2021 to examine the history and current politics of vaccines in the U.S. in anticipation of a coronavirus vaccine becoming available in the coming weeks.

In this newsletter, you will find information about our Spring 2021 course offerings, new faculty, events, opportunities, and a list of faculty who teach courses in the minor. Our second issue will be published in April 2021, and we welcome ideas for information to include. Good luck as you finish up this challenging semester. I wish all of you a wonderful holiday season and look forward to crossing paths soon.

-Rachel Washburn

## CONTENTS

- New Faculty Spotlight
- Spring 2021 Classes
- Past Events
- Opportunities
- Listing of Faculty Teaching in the Program
- Call for Submissions

# New Faculty Spotlight

We are delighted to welcome two new tenure-track faculty members to LMU, both of whom conduct research and teach in areas of relevance to the Health and Society Program. We reached out to these faculty members, **Dr. Magaela Bethune** and **Dr. Amanda Apgar**, to learn more about their scholarship, interests, and what drew them to LMU.



**Dr. Magaela Bethune**

Department: African American Studies

**Q: What are your areas of teaching and research?**

**Magaela Bethune:** I teach an Introduction to African American Studies and Social Science Research Methods courses. In Spring 2021, I will also be teaching a course cross-listed with Health and Society that focuses on race, health and society. My research focuses on young people's engagement with media and its impact on their sexual health and development at the intersections of race, gender, and sexual identity. My work is informed by intersectionality as an analytic tool and the use of community-engaged action research methods.

**Q: What is most exciting about your research?**

**MB:** What lights my fire with research is when I get the opportunity to engage directly with the communities that are served by my work. Built into the mission and purpose of Black/African American Studies is the tradition of critical inquiry and community engagement. I get to extend this orientation into my health-focused research, illuminating disparities in young people's health and issues of health equity.

**Q: What attracted you to LMU?**

**MB:** For the type of work that I do, it is essential that students and University community is primed for dialogue and engagement in critical inquiry, thinking, and praxis. I find home at LMU due to its pedagogical mission to "educate the whole person" and its promotion of a social justice orientation.

**Q: What are your favorite things to do when you're not teaching or working on your research?**

**MB:** My favorite escapes include exploring easygoing hiking trails and botanical gardens of southern California. I am new to the area, and it has been therapeutic to discover new flora and fauna of the region. I also enjoy cooking slow, luxuriated cooking experiences and the satisfaction of eating my creations.



# New Faculty Spotlight



**Dr. Amanda Apgar**

Department: Women's and Gender Studies

## Q: What are your areas of teaching and research?

**Amanda Apgar:** My field is feminist disability studies (FDS). FDS is a critical study of ableism, or the privileging of normative bodyminds that extends from and reinforces anti-Black, eugenicist, colonialist, and capitalist logics. This definition of ableism comes from Talila “TL” Lewis, a social justice advocate and attorney (<https://www.talilalewis.com/>). I am currently completing my first book, which examines memoirs written by parents of children with disabilities. In the book, I analyze the ways in which gender and disability are entangled in cultural and medical narratives about childhood and expectations for the life course. In addition to disability memoir, my research areas include cultural representations of disability, neurodiversity, disability and sexuality, disability law and policy, and Deaf culture and American Sign Language. At LMU I am delighted to be a part of the Department of Women’s and Gender Studies. I am currently teaching WGST 1000, Gender and Social Movements and WGST 2200, Women’s Bodies, Health, and Sexuality. In Spring 2021 I am teaching WGST/HEAS 3998, Gender and Disability, the first critical disability studies course at BCLA. I hope to develop the courses “Disability, Sex, and Consent,” and “Queering Childhood” to teach sometime in the future at LMU.

## Q: What is most exciting about your research?

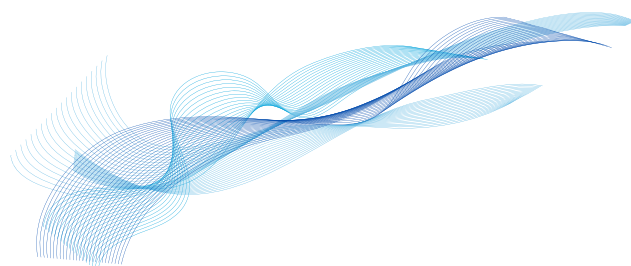
**AA:** Perhaps the scholars and activists with whom I have the privilege of being in conversation, from whom I learn, and whose work I get to share with students. Folks in disability justice and feminist disability studies are, in my assessment, leading cultural dialogues on racial and environmental justice, on abolition, on decolonization, on ending health disparity, and imagining the rad, just, new world order.

## Q: What attracted you to LMU?

**AA:** Brilliant colleagues, ambitious students, institutional commitment to advancing scholarship and social justice, opportunities for interdisciplinary connections related to my research (including SFTV, Loyola Law School, and the School of Ed), and the possibility of growing the first ever disability justice studies program in the United States.

## Q: What are your favorite things to do when you're not teaching or working on your research?

**AA:** I have a backpack for my dog and I love going for adventure rides and hikes with her.



# Spring 2021 Classes

HEAS 2000, Introduction to Health and Society

HEAS/BIOE 1999, Introduction to Bioethics

HEAS/BIOL 2998, Epidemics and Infectious Diseases

HEAS/WGST 2998, Women's Bodies, Health, and Sexuality

HEAS/AFAM 3998, Race, Health and Social Justice

HEAS/URBN 3998, Sustainable Cities

HEAS/WGST 3998, Gender and Disability

HEAS 3998, Global and Community Health

HEAS/CMST 3998, Communication and Healthcare

HEAS/HIST 4998, Global Health in Africa

HEAS/FTVS 4998, Science Fiction and Biopolitics

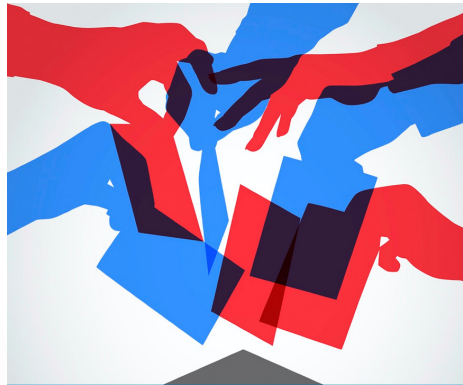


# Past Events



## Interdisciplinary Panel on Covid-19

Health and Society faculty share their expertise on the COVID-19 pandemic.



The LMU Anti-Racism Project presents  
**Why Do People Vote Against Their Own Self-interests?:  
 The 2020 Election and the Politics of Racial Resentment**

Thursday, Nov. 12, 2020  
 3 - 4:30 p.m.

with Jonathan Metzl, M.D., Ph.D.



Register:  
[lmu.edu/metzl](http://lmu.edu/metzl)

## HEALTH MATTERS

The Health and Society Program presents

### WHAT BIG DATA FEELS LIKE: QUANTIFYING THE EVERYDAY THROUGH WEARABLE HEALTH TECHNOLOGIES

A TALK BY DR. MIKKI KRESSBACH  
 ASSISTANT PROFESSOR OF FILM,  
 TELEVISION, AND MEDIA STUDIES

Wearable technologies, such as Fitbit and Apple Watch, quantify ordinary habits and behaviors in service of "self-knowledge." By transforming movements and vitals into data, wearables seemingly offer users comprehensive portrait of their bodies and health. While numerous scientific studies have discounted the accuracy of these devices, wearable technologies continue to be a popular resource for individuals to learn about themselves. This talk examines to how these devices produce the impression of self-knowledge, or communicate a sense of scientific authority. Through an emphasis on embodiment, or talk illustrates how scientific authority is articulated through a combination of data visualization strategies and haptic feedback (e.g. vibration and push notification features). Attending to the experiences of wearable technologies demonstrates how big data methodologies can impact an individual's sense of health and wellbeing. At the same time, it shows that in spite of big data's rhetoric of magnitude and threats of homogenization, "what big data feels like" is unmistakably uneven and includes a diverse range of embodied and affective relations to technology.

November 13, 2019  
 4:30pm-5:30pm

refreshments following talk

Marymount Center  
 University Hall  
 3rd Floor North East Corner

## Covering Pandemic, Protests, State Violence, Economic Hardship and the Election



Journalists and Loyola Marymount University professors Benjamin Gottlieb, Robbie Martinez, Kate Fickett and Tara Fixley discuss the state of journalism in 2020.

Moderated by LMU Journalism Director Evelyn McDonnell

Tuesday Oct. 27 | 5:00-6:15pm

## JOURNALISM IN CRISIS!

Register in advance at  
[bellarmine.lmu.edu/jouevent](http://bellarmine.lmu.edu/jouevent)



Presented by LMU Journalism, with support from LMU's Global Policy Institute and Health and Society program

## TESTOSTERONE

AN  
 UNAUTHORIZED  
 BIOGRAPHY

Testosterone  
 is not what  
 you think it is

An LMU History  
 Department event  
 with Rebecca M.  
 Jordan Young &  
 Katrina Karkazis

Monday  
 February 24, 2020  
 4:30 - 6:00 p.m.

William H. Hannon Library  
 Von der Ahe Suite



This event is co-sponsored by Student Affairs, Phi Beta Kappa, the Bellarmine College of Liberal Arts Dean's Office, the Frank R. Sewer College of Science & Engineering, Dean's Office, and the Health & Society Program, with additional support from the Bioethics & Society Program, the Department of Theological Studies, the Department of Women's & Gender Studies, the Department of English, the Journalism Program, and the Academy of Catholic Thought & Imagination.

# Opportunities



Spring 2021  
**GLOBAL INTERNSHIPS**

**A new way to gain career experience**

- Work remotely with companies abroad
- Expand your professional network
- Gain optional academic credit from LMU

## **Sustainability, Human Rights, and Public Health Internships in Asia, Latin America, and Africa**

12-week research and internship opportunities available with the School for International Training (SIT)

Eligible for 0- or 1-unit through LMU CPD 2100 Internship Course

**Application due December 14th**

Cost: \$1,080 - \$1,950

Internship Listing:

Cameroon: Virtual Internship in Women's Rights & Resilience in Conflict Situations

Chile: Virtual Internship in Education & Social Change Organizations

Ecuador: Virtual Internship in Environment, Conservation, and Ecosystems

India: Virtual Internship in Environment, Development & Sustainability

India: Virtual Internship in Public Health, Community Action & Response to Covid-19 Pandemic

Jordan: Virtual Internship in Community Empowerment & Climate Change Internship

Kenya: Virtual Internship in Public Health & the Covid-19 Pandemic in the Tropics

Netherlands: Virtual Internship in Sexuality, Gender & Non-Government Organizations

Panama: Virtual Internship in Sustainable Community Development

Serbia & Kosovo: Virtual Internship in Transitional Justice, Human Rights & Memory Activism

South Africa: Virtual Internship in Diplomacy, Conflict Resolution, and International Relations

Vietnam: Virtual Internship in Development & Gender

**For More Information Visit:**

<https://academics.lmu.edu/studyabroad/academicsprograms/virtualopportunities/>

# Opportunities



From U.S. PIRG: Want to launch your career in public health policy, advocacy, or non-profit work? U.S. PIRG is hiring class of 21' grads for their Public Health Campaign Associate positions across the nation. With our robust network of experts and substantial skills training, this program offers recent grads an incredible first step in launching your career in Public Health. Learn more and apply today!

## **U.S. PIRG END THE NICOTINE TRAP CAMPAIGN ASSOCIATE**

**Location:** Boston, MA or Portland, ME (Remote)

**Details:** The Public Health team with U.S. PIRG is seeking a Campaign Associate to help lead our End the Nicotine Trap campaign. Visit <https://jobs.uspirg.org/public-health-campaign-associate.html> for more details.

## **U.S. PIRG HIGH VALUE HEALTHCARE CAMPAIGN ASSOCIATE**

**Location:** Washington, D.C. (Remote)

**Details:** U.S. PIRG is seeking a Campaign Associate to help lead our High Value Healthcare Campaign. Visit <https://jobs.uspirg.org/healthcare-campaign-associate.html> for more details.

## **U.S. PIRG MAKE IT TOXIC FREE ADVOCATE**

**Location:** Chicago, IL; Philadelphia, PA; or Washington, D.C. (Remote)

**Details:** U.S. PIRG seeks a Make It Toxic Free Advocate to protect people from harmful chemicals in everyday products. The Make It Toxic Free Advocate will run our campaign to call on three of the largest personal care and home cleaning care companies, L'Oreal, P&G and Unilever to go toxic-free, and convince decision-makers to replace these dangers in common products with favor of safer alternatives. Visit <https://jobs.uspirg.org/toxic-free-advocate.html> for more details.

## **CALPIRG PUBLIC HEALTH CAMPAIGN ASSOCIATE**

**Location:** Oakland, CA or Sacramento, CA (Remote)

**Details:** We are seeking Campaign Associates to work on other campaigns in locations across the country. We accept applications on a rolling basis. For the foreseeable future, all of our staff are working remotely due to the COVID-19 pandemic. This position starts in August 2021. Visit <https://jobs.uspirg.org/CA-campaign-associate.html> for more details.

# Faculty Teaching in the Program

**Dr. Amanda Apgar** (amanda.apgar@lmu.edu)

Dept: Women's and Gender Studies

Courses: Women's Bodies, Health, and Sexuality;  
Gender and Disability

**Dr. Magaela Bethune** (magaela.bethune@lmu.edu)

Dept: African American Studies

Courses: Race, Health and Social Justice

**Dr. Carla Bittel** (carla.bittel@lmu.edu)

Dept: History

Courses: Science, Nature & Society in the West; Health  
and Disease in American Culture

**Dr. Nicholas Brown** (nicholas.brown@lmu.edu)

Dept: Bioethics

Courses: Introduction to Bioethics

**Dr. Stacy Burns** (stacy.burns@lmu.edu)

Dept: Sociology

Courses: Drugs and Society

**Dr. Rob Cancio** (roberto.cancio@lmu.edu)

Dept: Sociology

Courses: Health and Social Justice

**Dr. Chris Cappelli** (christopher.cappelli@lmu.edu)

Dept: Health and Human Sciences

Courses: Public Health

**Dr. Deanna Cooke** (deanna.cooke@lmu.edu)

Dept: Psychology

Courses: Poverty and Community Resilience

**Dr. Cheryl Grills** (cheryl.grills@lmu.edu)

Dept: Psychology

Courses: African and Black Psychology; Community  
Psychology

**Dr. Devon Golaszewski** (devon.golaszewski@lmu.edu)

Dept: History

Courses: Global Health in Africa

**Dr. Cheryl Hertz** (cheryl.hertz@lmu.edu)

Dept: Biology

Courses: Epidemics and Infectious Diseases

**Dr. Inas Kelly** (inas.kelly@lmu.edu)

Dept: Economics

Courses: Health Economics

**Dr. Mikki Kressbach** (mikki.kressbach@lmu.edu)

Dept: Film and TV Studies

Courses: Science, Medicine, and Digital Media

**Dr. Carla Marcantonio** (carla.marcantonio@lmu.edu)

Dept: Film and TV Studies

Courses: Science Fiction and Biopolitics

**Dr. Anna Muraco** (anna.muraco@lmu.edu)

Dept: Sociology

Courses: Sociology of Aging

**Dr. Allison Noyes** (allison.noyes@lmu.edu)

Dept: Communication Studies

Courses: Communication and Healthcare

**Dr. Mona Seymour** (mona.seymour@lmu.edu)

Dept: Urban and Environmental Studies

Courses: Agriculture, Food, and Justice; Sustainable  
Cities

**Dr. Shira Shafir** (shira.shafir@lmu.edu)

Dept: Health and Society

Courses: Global and Community Health

**Dr. Mairead Sullivan** (mairead.sullivan@lmu.edu)

Dept: Women's and Gender Studies

Courses: Women's Bodies, Health, and Sexualities

**Dr. Heather Tarleton** (heather.tarleton@lmu.edu)

Dept: Health and Human Sciences

Courses: Public Health; Health Services for  
Marginalized Populations; Healthcare Administration

**Dr. Rachel Washburn** (rachel.washburn@lmu.edu)

Dept: Sociology; Health and Society

Courses: Introduction to Health and Society; Sociology  
of Health, Illness, and Biomedicine



# Call for Submissions

Do you have stories, awards, ideas, or opportunities you would like to share with the Health and Society community? Our next newsletter will be published in April. Send your information our way, but no later than April 1, 2021.

Send information to:  
Rachel Washburn at [rachel.washburn@lmu.edu](mailto:rachel.washburn@lmu.edu)

OR

Robin Thimbriel at [robin.thimbriel@lmu.edu](mailto:robin.thimbriel@lmu.edu)



WISHING YOU

**HAPPY  
HOLIDAYS**